



STIRLING TUITION  
WWW.STIRLINGTUITION.COM

Answers/  
Workings/ Tips

Set 1  
Practice Test  
Paper 1

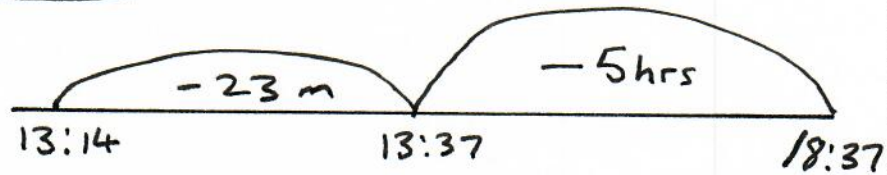
1. The chocolates in one packet weigh 47g. Sam is having a birthday party and has purchased 25 single packets for his friends. What is the weight of all the chocolates in total? **Give your answer in kilograms** Write your answer in the space below.

$$\begin{array}{r} 47 \\ \times 25 \\ \hline 235 \\ 940 \\ \hline 1175 \end{array}$$

$$1175 \div 1000 = 1.175$$

1.175 kg

2. John arrived home from the shops at 6:37 pm. He left for the shops 5 hours and 23 minutes earlier. At what time did he leave to go to the shops? Write your answer, using the **24-hour clock**, in the space below.



13:14

3. For a school project, children had to count the number of insects on 6 flowers. The number of insects on each of the 6 flowers is given below.

11 13 15 7 10 16

Calculate the **mean** (average) number of insects on a flower. Write your answer in the space below.

$$\begin{array}{r} 11 \phantom{)} \rightarrow 24 \\ 13 \phantom{)} \rightarrow 22 \\ 15 \phantom{)} \rightarrow 26 \\ 7 \phantom{)} \rightarrow 26 \\ 10 \phantom{)} \rightarrow 72 \\ + 16 \phantom{)} \rightarrow 72 \\ \hline \end{array}$$

$$6 \overline{) 72}$$

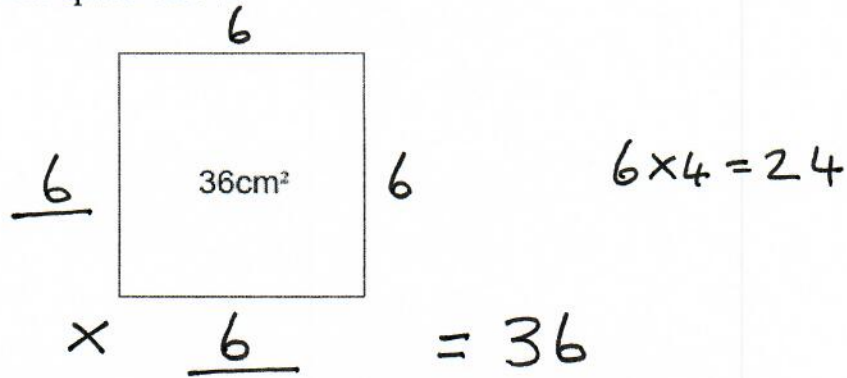
12 insects

4. Look again at the numbers in Q3. What is the **range** for the number of insects on a flower? Write your answer in the space below.

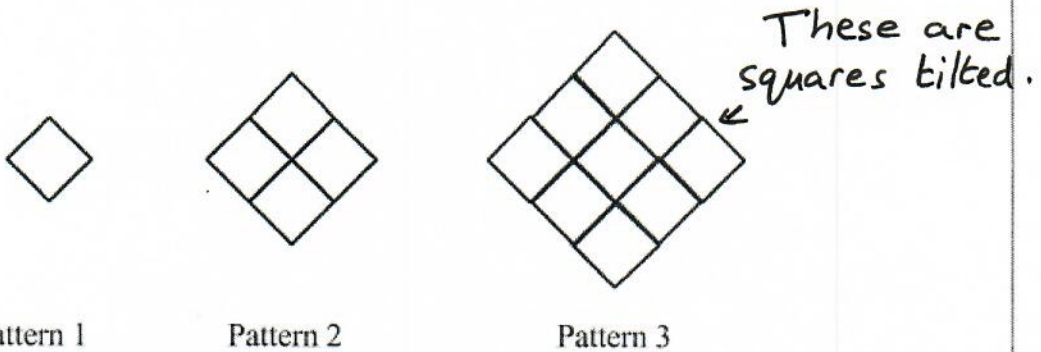
9 insects

$$\begin{array}{r} 16 \\ - 7 \\ \hline 9 \end{array}$$

5. Look at the **square** below. It has an **area of  $36\text{cm}^2$** . What is its **perimeter**?  
Write your answer in the space below.



6. Look at the sequence of 3 patterns below. Each pattern is made up of small squares.



Look at the table below. It shows the number of small squares in each pattern.

Pattern	Squares
1	1
2	4
3	9

All square numbers.

How many **squares** are needed to make **Pattern 7**?  $= 7 \times 7 = 49$   
Write your answer in the space below.

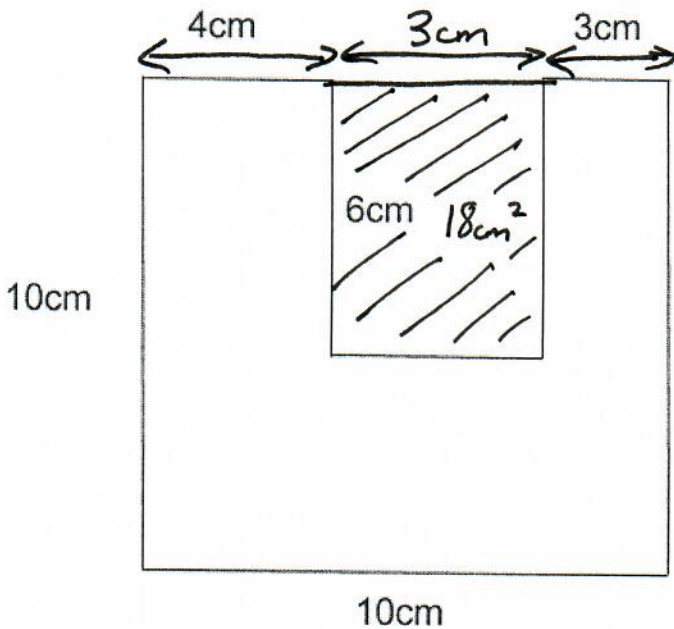
49 squares

7. The temperature at noon on **Tuesday** is  $-9^{\circ}\text{C}$ . The temperature **increases by  $3^{\circ}\text{C}$  every 24 hours**. What is the temperature at **noon** on **Saturday**? Write your answer in the space below.



3  $^{\circ}\text{C}$

8. Look at the shape below. Calculate the **area** of the shape. Write your answer in the space below.



$$10 \times 10 = 100$$

$$3 \times 6 = 18$$

$$\begin{array}{r} 100 \\ - 18 \\ \hline 82 \end{array}$$

82  $\text{cm}^2$

**Autumn**

I stood in the disenchanted field,  
 No noise, clamour, or talking.  
 Summer leaving in a hurry,  
 With a blink of autumn's spark.  
 Wondering where she's heading,  
 Upon autumn's arrival.  
 Withering trees shedding their leaves,  
 In a farewell bid to summer.  
 I saw the ruddy moon lean over a hedge,  
 A welcome bid to autumn.

The rise of an autumn,  
 In a bright beam world of our own.  
 An Autumn of peace,  
 Embedded with the wind of glory,  
 To ripen the fruits of our lives.

As I asked her of her mission,  
 The maiden answered with a song.  
 "The purpose of an autumn,  
 Is to deliver a message of love,  
 A warning against cold,  
 The dreaded winter of nature,  
 To help get the trees ready  
 With a message from the future."

9. **One** of the following words used in **verse one** is **not** an **adjective**. Tick the word which is not an adjective.

- disenchanted
- talking  (Verb)
- withering
- ruddy

(1)

10. Which of the following best describes the mood of this poem? Tick the **best** answer below.

angry

thoughtful

frightening

joyful

Verse 1 Line 5 Wondering

11. Write the five words below in **alphabetical** order in the spaces provided. The first one has been done for you.

field

farewell

from

future

fruits

farewell

field

from

fruits

future

12. In **verse one** of the poem, which **phrase of seven or more words** describes **the sun setting**? Write your answer in the space below.

(I saw) the ruddy moon lean over a hedge

(means red)

(4)

13. Look at the **three** words below. They are written in the **past** tense. Write the **present** tense of each word in the space provided. **Be careful with your spelling.**

stood

stand

saw

see

asked

ask

14. Look at verse **three** of the poem. Find the word which is closest in meaning to a **quest**. Write your answer in the space below.

mission

15. This question tests your knowledge of **apostrophes**. Look at the **four** pairs of words highlighted in the passage below. In each pair, only **one** word is correct. **Circle the correct** word from each pair.

I enjoyed reading this poem because I liked its it's message. The

maiden's maidens song explains the meaning of the poem. My brothers brother's

birthday is in Autumn. He's Hes always excited when Autumn comes.

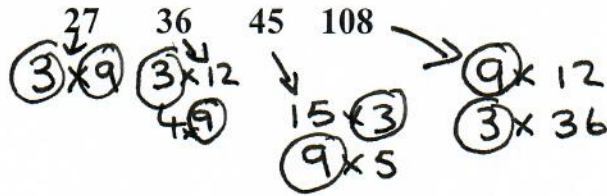
possession  
of  
the  
song.

He is

possession  
of  
the  
birthday.

(4)

16. Look at the four numbers below. All four numbers are **multiples** of the same number. What is that number? Write your answer in the space below.



3 or 9

17. A set of football cards normally costs £1.40 at the local shop. They have an offer for **3 for the price of 2**. How much **cheaper** are the three sets of football cards in their offer compared with three sets of football cards at the normal price? Write your answer in the space below.

$$\begin{array}{r}
 3 = 3 \times 1.40 \\
 - 2 = 2 \times 1.40 \\
 \hline
 1 \times 1.40 = 1.40
 \end{array}$$

£ 1.40

18. Derek eats **0.07kg** of spinach each day as part of his healthy diet. How much food does he eat in the **month of April**? Give your answer in **grams**. Write your answer in the space below.

$$\begin{array}{l}
 0.07 \times 1000 = 70 \\
 30 \text{ days in April} \\
 \overbrace{30 \times 70} = 2100
 \end{array}$$

2100 g



19. Look at the function machine below.



Use this function machine to **complete the table below**. The first one has been done for you.

In	Out
16	1
48	9
240	57

$$48 \div 4 = 12 - 3 = 9$$

$$57 + 3 = 60 \times 4 = 240$$

20. Look at the question below.

$$142 - q = 67$$

What is the value of  $q$ ? Write your answer in the space below.

$$\begin{array}{r} 13 \\ 142 \\ - 67 \\ \hline 75 \end{array}$$

75

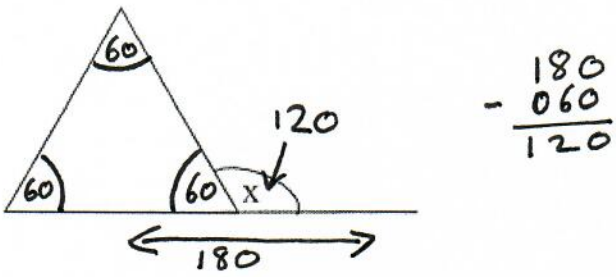
21. Turn 143 minutes into hours and minutes. Write your answer in the space below.

$$\begin{array}{r} 143 \\ - 120 = 2 \text{ hrs} \\ \hline 23 = \text{mins} \end{array}$$

$$\begin{array}{l} 60 = 1 \text{ hr} \\ 120 = 2 \text{ hrs} \\ 180 = 3 \text{ hrs} \end{array}$$

2 hours and 23 mins

22. Look at the shape below. The triangle is an **equilateral** triangle.



What is the size of angle  $x$ ? Write your answer in the space below.

120 °

(1)

The passage you are about to read contains five errors. Read the passage and then answer the questions that follow it.

Castle Espie <sup>Sunny (24)</sup>

In the summer, my mum and I went on a day trip to Castle Espie (line 1)  
 Wetland Centre. Castle Espie is a nature reserve just outside (line 2)  
 Comber in County Down. It is run by The Wildfowl and Wetlands (line 3)  
 Trust and it is a place where nature and birds are protected. It was (line 4)  
 a nice sunny day which was good because you spend most of your (line 5)  
 time walking around outside! First of all we went to the duck pond (line 6)  
 to feed the animals there. Hear, you can get up close to the birds (line 7)  
 and feed them with seeds you buy in the shop. Some of the birds (line 8)  
 will even take the seeds out of your hand! Then we went through (line 9)  
 the gates and out into the reserve. The animals here are wild and (line 10)  
 so they are not easy to spot. But we did find a very friendly robin (line 11)  
 in the woods who followed us for a while. In the woods there is (line 12)  
 The Secret Swamp which is a very cool play area for kids. There (line 13)  
 is a zip wire, tree houses and magical carved trees. I would have (line 14)  
 liked to go to The Duckery, where the babies are born, but this (line 15)  
 was closed on the day we went. We walked around in the sun for (line 16)  
 over three hours. We enjoyed seeing all the nature and it was very (line 17)  
 peaceful. Then we went into the café at the centre for lunch. I really (line 18)  
 liked the café because the food was good and you can sit and look (line 19)  
 at all the ducks and birds through the huge windows. Would I go (line 20)  
 back to Castle Espie? I would say yes because it's a special place that (line 21)  
 helps you get close to nature. (line 22)

<sup>Comma (26)</sup> <sup>apostrophe (27)</sup>

(25)

23. Each line of the passage is numbered. A word has been used incorrectly in the passage. Tick the number of the line where the error was made.

- line 1
- line 3
- line 7
- line 15

(1)

24. There is a spelling error in one of the lines. Tick the number of the line containing the spelling error.

- line 2
- line 5
- line 8
- line 12

25. A question mark is needed instead of a full stop in one line of the passage. Tick the number of the line where the question mark is needed.

- line 3
- line 12
- line 18
- line 21

26. A comma is missing from one of the lines of the passage. Tick the number of the line with the missing comma.

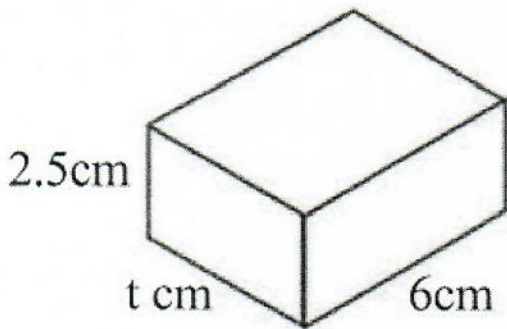
- line 4
- line 12
- line 14
- line 20

27. There is an apostrophe missing from one of the words in the passage. Tick the number of the line containing the word with the missing apostrophe.

- line 5
- line 6
- line 15
- line 21

(4)

28. Look at the **cuboid** below. Work out the value of **t** if the **volume** of the cuboid is **60cm<sup>3</sup>**. Write your answer in the space below.



$$6 \times 2.5 \times t = 60$$

$$6 \times 2.5 = 15$$

$$15 \times t = 60$$

$$60 \div 15 = t$$

$$t = 4$$

$$t = \underline{4} \text{ cm}$$

29. Ruth and Grace are going to share the cost of a holiday to Greece costing **£465**. Grace is going to pay  $\frac{2}{5}$  of the price. How much is **Ruth going to pay**? Write your answer in the space below.

$$\times \frac{3}{5} \text{ of } 465$$

$$\div \frac{3}{5} \text{ of } 465$$

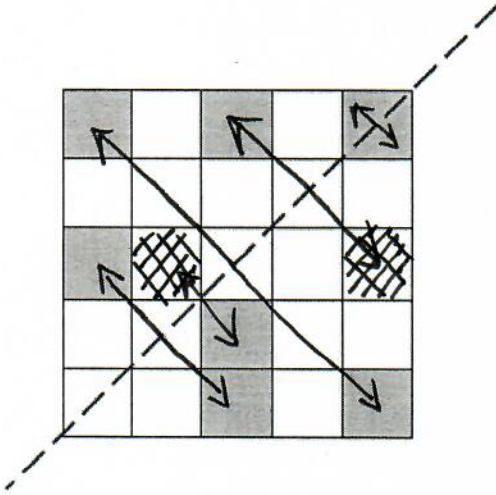
$$\text{£ } \underline{279}$$

$$5 \overline{) 465} \begin{array}{r} 093 \\ \underline{465} \\ 0 \end{array}$$

$$\begin{array}{r} 93 \\ \times 3 \\ \hline 279 \end{array}$$

30. Look at the shape below. It has a **mirror** line running through the **diagonal** of the shape.

Shade in **two** more **squares** on the shape to make the shape **symmetrical** along the mirror line.



31. Look at the shape in Q30. What **percentage** of the shape is shaded (**including the 2 extra squares you shaded**)? Write your answer in the space below.

$$\underline{36} \% \quad \frac{9}{25} \xrightarrow{\times 4} \frac{36}{100} = 36\%$$

32. Barney needs **330 tiles** to cover a floor. The shop only sells the tiles in **packs of 25**. How many **complete** packs will Barney need to buy to cover the floor? Write your answer in the space below.

$$\begin{array}{r} 013 \text{ r } 5 \\ 25 \overline{) 330} \end{array} \quad \text{or}$$

$$250 = 10 \text{ packs}$$

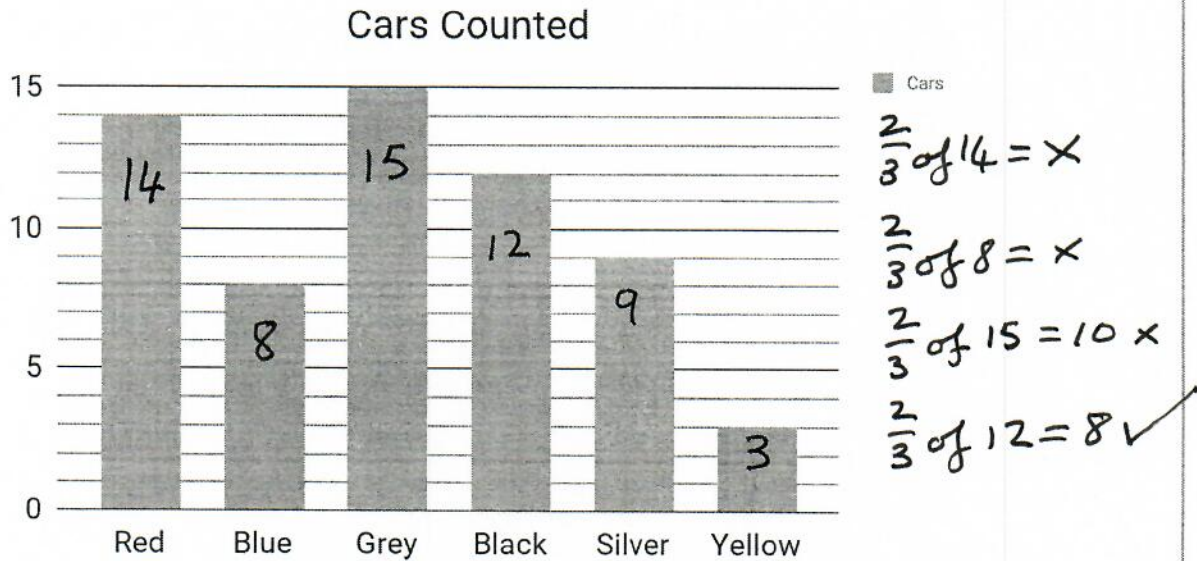
$$300 = 12 \text{ packs}$$

$$325 = 13 \text{ packs}$$

$$350 = 14 \text{ packs}$$

14 complete packs

33. Clare is doing a survey outside her house to see how many of each different coloured cars drive past her house. The bar chart below shows her results over a two-hour period. Use the bar chart to answer the questions below.



How many **cars** did she record in **total**? Write your answer in the space below.

61 cars

$$\begin{array}{r}
 14 \\
 8 \\
 15 \\
 12 \\
 9 \\
 3 \\
 \hline
 61
 \end{array}$$

34. Look again at the bar chart in Q33. One of the colours of cars recorded is  $\frac{2}{3}$  of the amount of another colour of car. Write your answer in the spaces below to make the sentence correct.

The amount of Blue cars is  $\frac{2}{3}$  of the amount of Black cars.

35. Look at the question below.

$$156 \div x = 13$$

$$\begin{array}{r}
 012 \\
 13 \overline{)156} \\
 \underline{13} \phantom{0} \\
 26 \\
 \underline{26} \\
 0
 \end{array}$$

What is the value of **x**? Write your answer in the space below.

12

(3)

## The Lonely Cloud

I drift along on the breeze, alone but not alone.

Up here I can see everything, but cannot be part of anything.

The towns and cities spread below me like a patchwork in grey,

As I silently float by unobserved, noiselessly gliding past,

Never in one place for too long, like a vaporous vagabond.

I see the people below me, tiny ants scurrying here and there,

They glance up at me from time to time, but not for long.

Their lives are fixed on this rock of earth and stone and concrete.

To them I am just a puff, a swirl, a curl, a haze

That shadows their lives and blocks out the sun.

Red hot soil cries out in agony and I respond, feeling its pain.

Crying over the earth, my tears soothe away the harsh cracks that scar the ground.

I feed the lakes and rivers that twist through the landscape,

They become giant snakes with swollen bellies full of my tears.

I watch from afar already moving on, a mist on the move.

And so I wander aimlessly, always taken by the wind,

Part of your world, but unnoticed and overlooked,

A quiet, silent, hushed and lonely cloud.

36. The words **drift** and **gliding** are used in **verse one**. In the **same** verse, find a word of **similar meaning**. Write the **best** word in the space below.

float



37. Find the **word** which is **closest in meaning** to **hurrying**. The word you are looking for is in **verse two**. Write your answer in the space below.

scurrying

38. Look at **verse three**. Why does the poet **compare** the rivers to **giant snakes**? Tick the **best** answer below.

The cloud sees giant snakes in the rivers below.

The rivers look like snakes from a great height.

The rivers are the same colour as snakes.

39. Alliteration is where **two or more words** having **the same first consonant sound**, occur close together. "mist on the move" is an example of alliteration in line **5** of verse **3**. Find another example of alliteration in the poem. Give your answer by writing a number in each of the two spaces below.

The other example of alliteration occurs in line 5 of verse 1.

40. Find the **word** in **verse three** which is closest in meaning to **enlarged**. Write the best answer in the space below.

swollen

(4)

41. Look at **verse three** of the poem. Which phrase of **six words** tells us that **the land is dry from lack of rain**? Write your answer in the space below.

harsh cracks that scar the ground

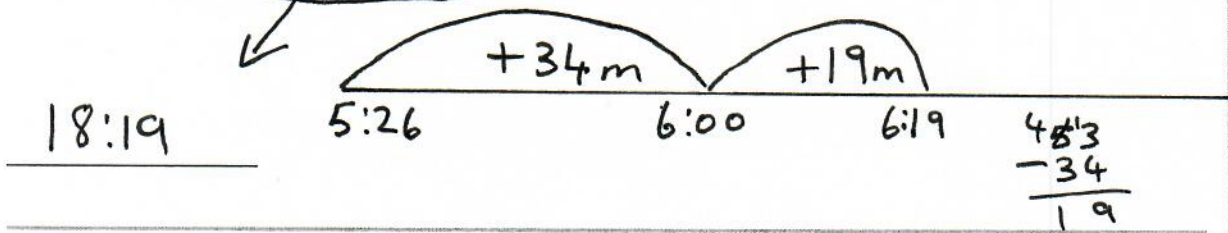
42. The four words; **drift**, **hot**, **aimlessly** and **rock** are used in the poem. Tick the correct box to show whether each one has been used in the poem as a **verb**, **noun**, **adjective** or **adverb**.

	verb	noun	adjective	adverb
drift	✓			
hot			✓	
<u>aimlessly</u>				✓
rock		✓		

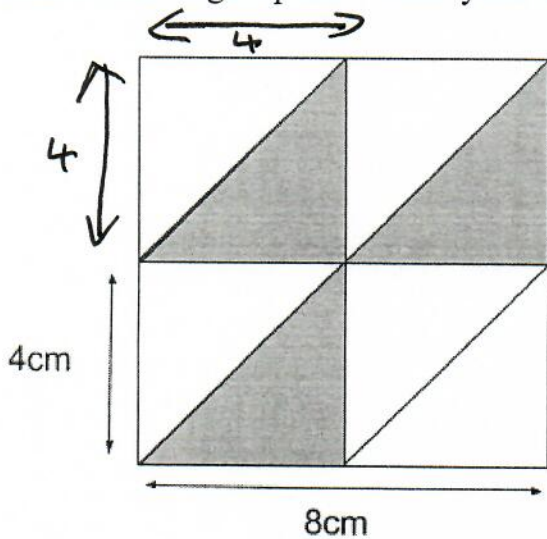
43. In **verse one** of the poem **silently** is used as an **adverb**. Find the **adverb** that it used in **verse four** of the poem. Write your answer in the space below.

aimlessly

44. Jennifer is doing her first ever park run. She starts at **5:26pm** and **crosses the finishing line 53 minutes later**. At what time does she **finish the race**? Give your answer using the **24 hour clock**. Write your answer in the space below.



45. Look at the diagram below. There is **one large square**. Within the large square are **four smaller squares, all of equal size**. Each side of the **large square** is **8cm**. Each side of the **smaller squares** is **4cm**. What is the **total area** of the **shaded areas** of the large square? Write your answer in the space below.



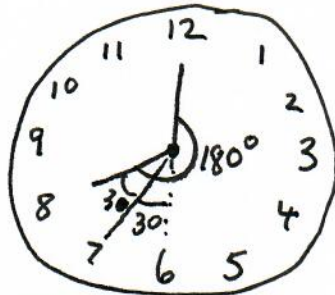
$$4 \times 4 = 16$$

$$16 \div 2 = 8$$

$$8 \times 3 = 24$$

24 cm<sup>2</sup>

46. What would the size of the **reflex angle**, on an analogue clock, be between the hour hand and the minute hand if the time was **8 o'clock**? Write your answer in the space below.



Reflex = more than 180°

$$180$$

$$+ 60$$

$$\hline 240$$

240 °



50. Maddy makes up the following rule below to test her friend Ruth:

**Multiply the previous number by 2 and then subtract 3**

Maddy gets Ruth to use this rule to write a sequence. Which number does Ruth write down **after number 9**? Write your answer in the space below.

15

$$9 \times 2 = 18 - 3 = \textcircled{15}$$

51. (Use the rule in Q50) Ruth continues the sequence. Which number comes **before 51** in the sequence? Write your answer in the space below.

Inverse

$$51 + 3 = 54 \div 2 = \textcircled{27}$$

27

(2)

## The Big Day

As the clock struck 08:00am, the shrill sound of the alarm broke the morning silence. Tom jolted awake, smacking the alarm off. He sat up and realised - this was his big day. After six months of planning, practising and waiting, the day of the performance had finally arrived. He showered quickly and went down the stairs for breakfast, though he could barely taste anything due to the butterflies in his stomach. He stepped out the door and made his way to his mum's waiting car.

The one hour journey to the auditorium seemed to go by in seconds. He was a nervous wreck, anticipating the worst. He was so distracted that when his mum announced, "We're here!" he nearly jumped out of his skin. He pulled the collar of his t-shirt away from his neck, which was prickly with sweat.

After a quick goodbye kiss and a reassuring smile from his mum, he made his way backstage to start preparing for his performance. The stage director led him to a cubicle where he could warm up his voice and do some last minute practise. He began to go over his lyrics, but it all sounded like white noise to him.

The stage director popped his head round the cubicle door and announced that he was due on stage in five minutes. Panic set in and he asked himself, why he was doing this? Then he remembered the talent scouts he hoped to impress would be sitting in the front row. If he was good enough, they might sign him up for a record deal.

He stepped out on stage and was immediately hit by the spotlight which highlighted the sheen of sweat on his forehead. He began to physically shake in fear, as if he had no control over his body. His chest grew tight as the microphone slipped out of his sweaty grasp crashing down with an amplified "Boom!" He bent down to retrieve it and vomited his breakfast of bacon and eggs all over the stage. This was definitely not going according to plan. The stage director rushed over to help him and led him off the stage. Tom felt like all his dreams had been shattered. "Never mind son," the stage director said awkwardly, "There's always next year."

52. Which word **in paragraph one** has the same meaning as **high-pitched**? Write the **best** answer in the space below.

shrill

53. Based on what you have read, which of the following words **describes Tom's mood**. Tick the **best** answer below.

- optimistic
- excited
- confident
- nervous

54. Find the **adjective** in **paragraph two** which tells us that Tom is so nervous he is **unable to concentrate** on anything. Write the **best** answer in the space below.

distracted

55. Look at **paragraph one** in the passage. Which **two words** tell us that Tom **did not wake up peacefully**? Write your answer below.

jolted awake

(4)

56. Look at **paragraph five** of the passage. Why did Tom **vomit on stage**? Tick the **best** answer below.

Tom's mum didn't cook his breakfast properly.

Tom is extremely nervous.

Tom is allergic to eggs.

57. Based on your reading of the **whole passage**, tick each of the statements below true, false or don't know. In each case tick the **best** answer.

**True      False      Don't Know**

Tom gets up at 08:00am every morning

The journey to the auditorium lasted 2 hours

Tom dreams of getting a record deal

No-one helped Tom when he was sick

True	False	Don't Know
		✓
	✓	
✓		
	✓	

58. Look at the **four words** below. For each word write the word **opposite in meaning** in the space provided. The words you are looking for all appear in paragraph **five** of the passage.

eventually immediately

courage fear

dawdled rushed

doubtfully definitely